

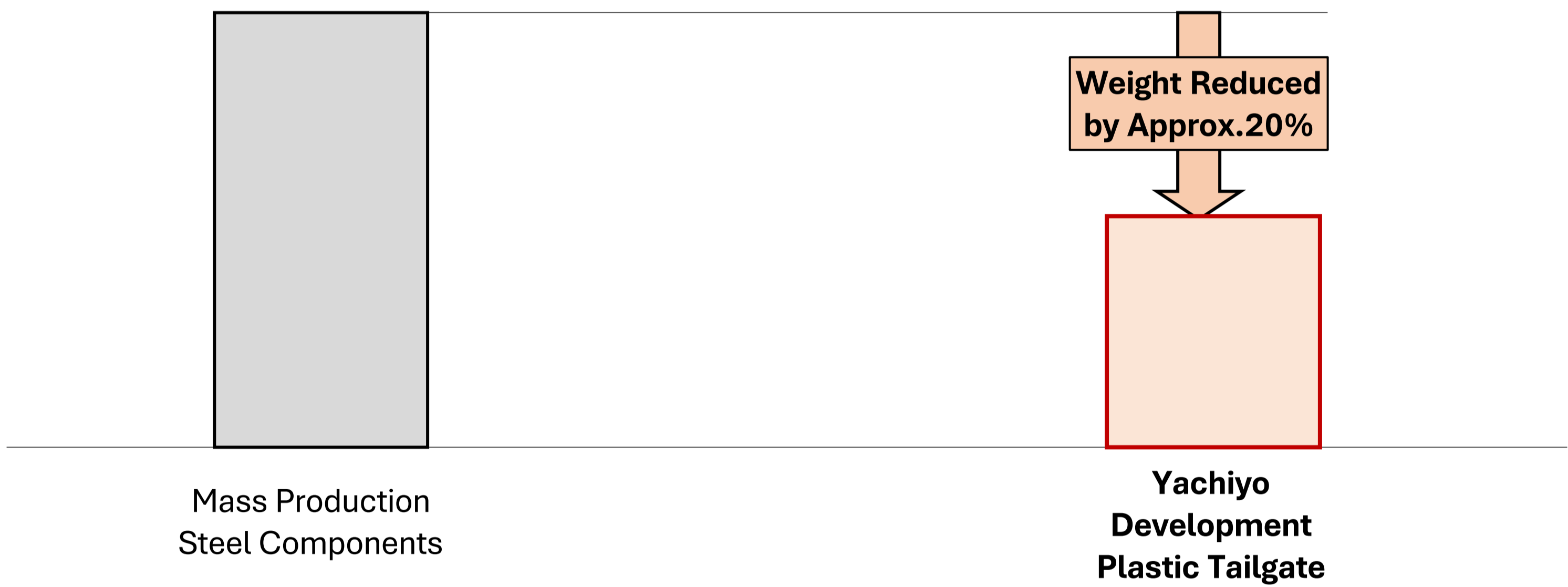
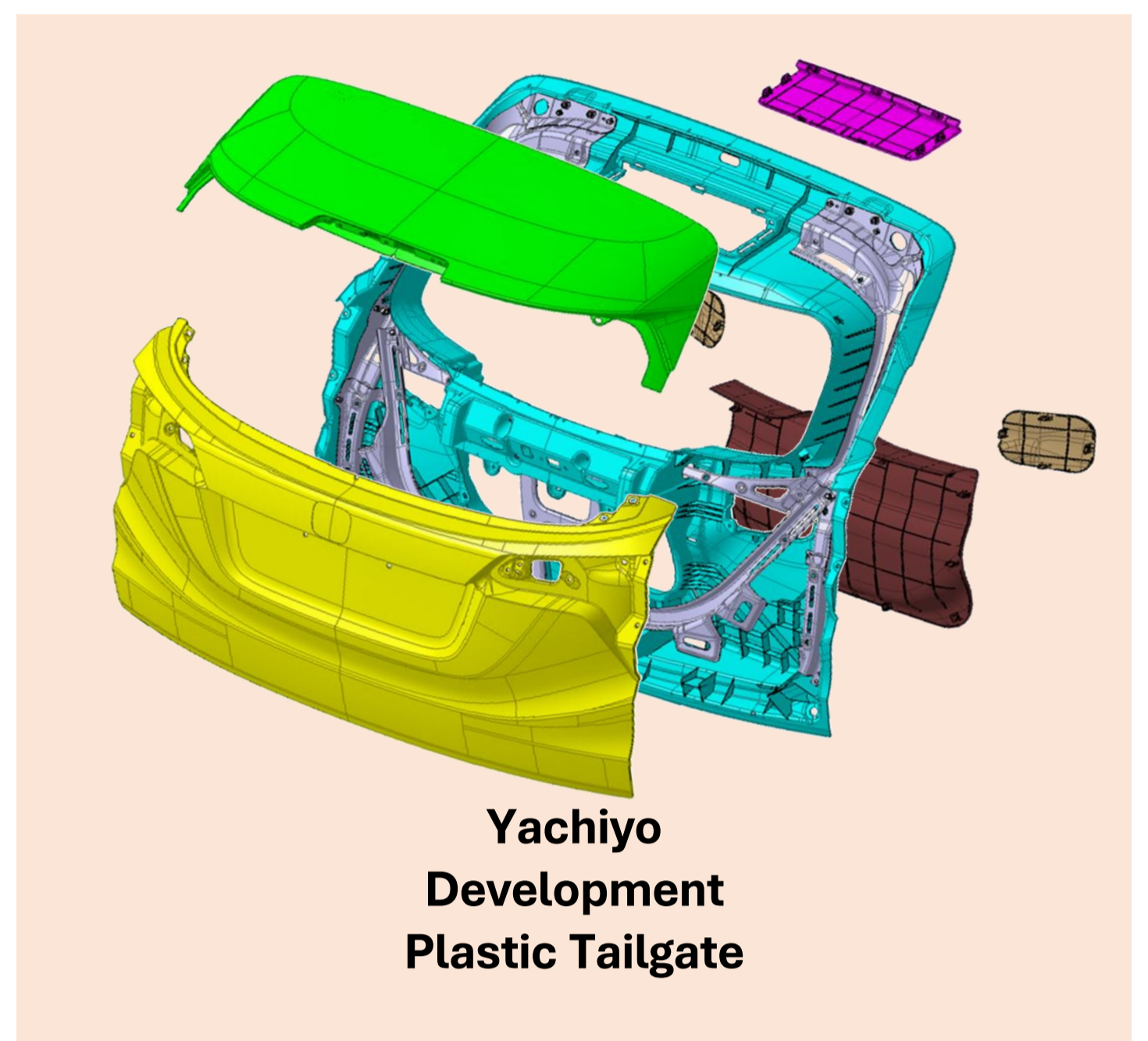
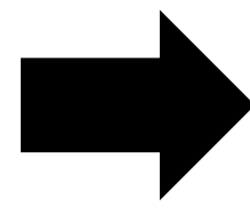
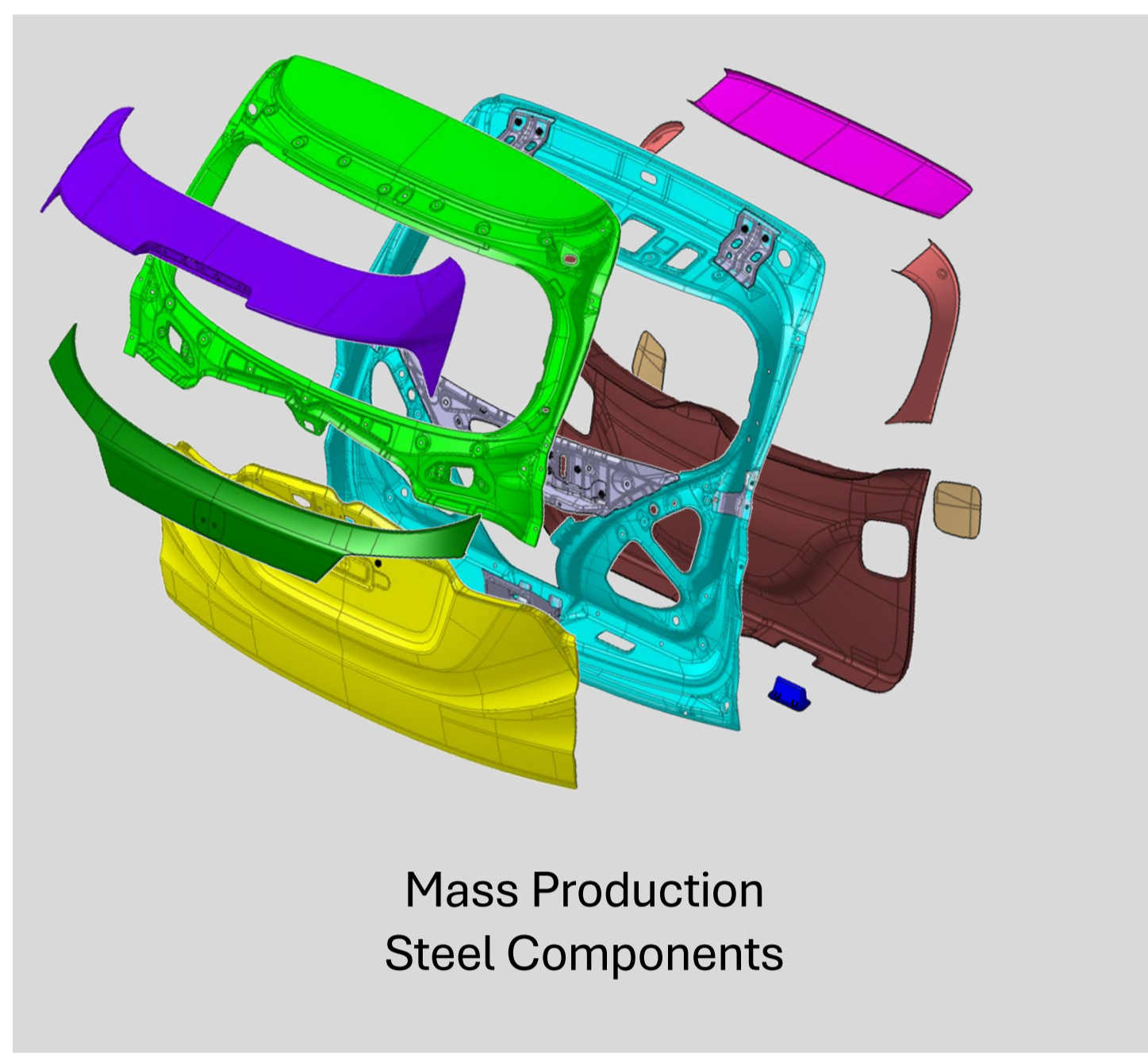
# Development of Plastic Tailgate Module

By utilizing the painting technology which we have cultivated since our founding, we are able to achieve both lightweight and low-cost production through integrated production from molding and painting to assembly.

**Reduction in the weight and cost by making them out of plastic**

## [FEATURE]

- Aiming to reduce weight by more than 20 % compared to steel.
- Reduction in the number of parts required through part integration and optimal part layout.
- Light weight and high rigidity are achieved by using appropriate materials in the upper, lower and inner components.
- Maximize VA by designing at the limit to meet performance requirements.

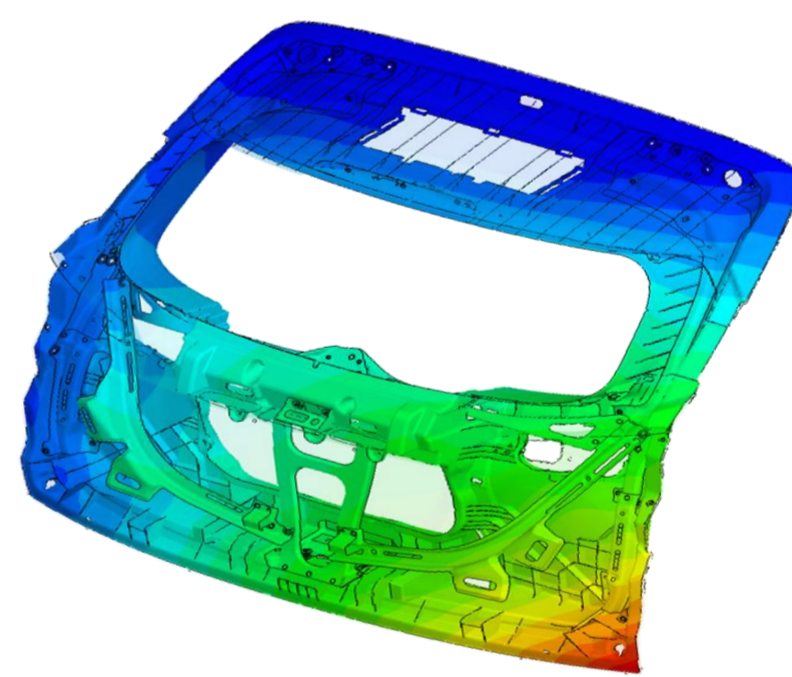
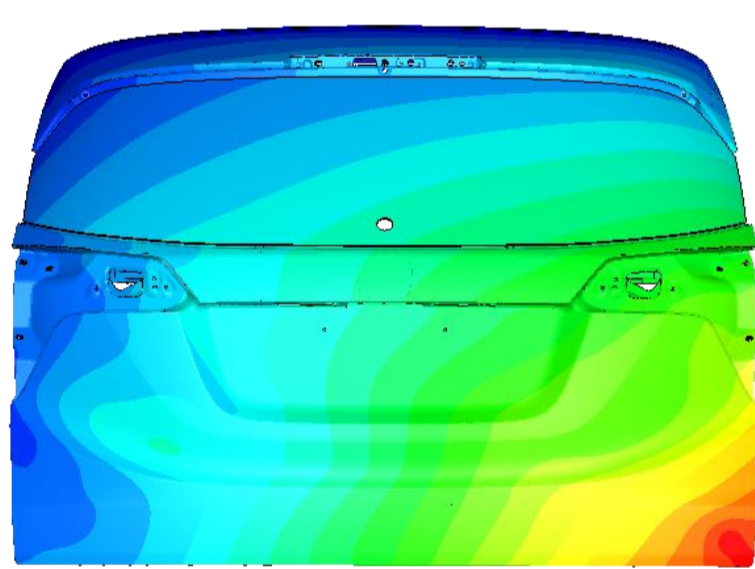


## Development Incorporating CAE Analysis

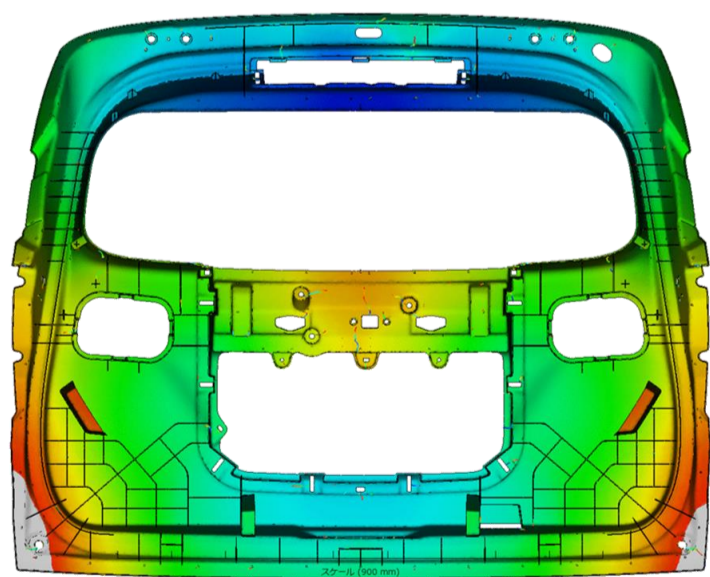
## [FEATURE]

- CAE analysis to predict displacement and flow analysis to verify formability in advance.
- Reduction in man-hours spent on part reworking by predicting injection machine performance from the analysis results.

### Prediction of Displacement

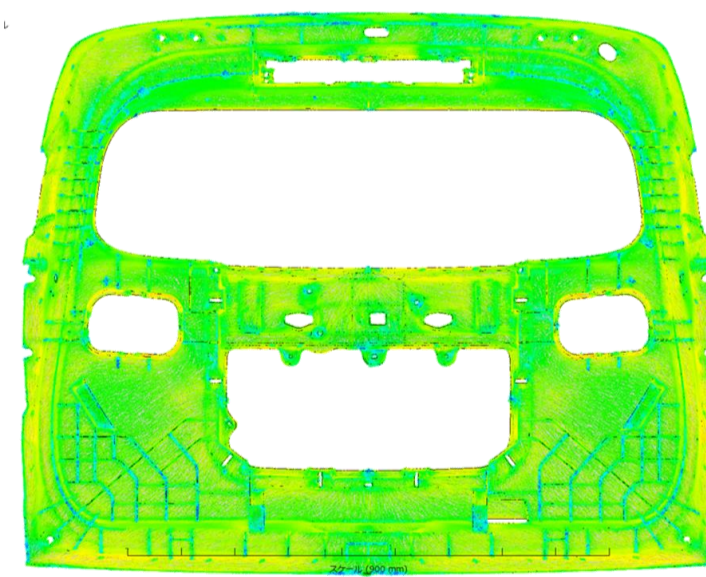


### Prior Verification of Formability



### Glass Fiber Direction

### Filling



## Yachiyo's Other Plastic Products

### Yachiyo Custom Parts CFRP Roof/RR Hood



### Plastic Bumpers

